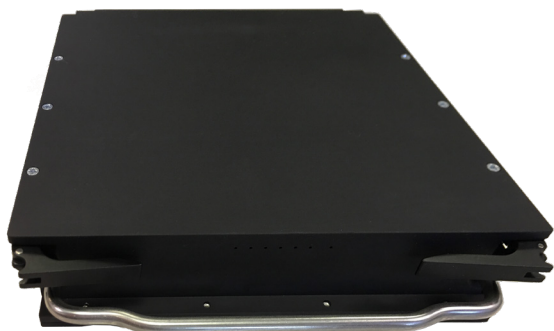




VAADRQuicksilver

qsBolt

SMALLER. LIGHTER. FASTER.



 Zero Dropped Frames

 Heavily Ruggedized

 Sustained High-Bandwidth

 RAW or Compressed Video
& Data Capture

FLEXIBLE

Work with our engineers to adapt its modular I/O architecture to your unique specifications and custom requirements.

RUGGED

Handle the most extreme working environments with a durable, rugged, shock-resistant construction inside and out.

COMPACT

Integrate easily in the field with one of the smallest, lightest, low-power recorders on the market, with a total volume of 48.7 cu in.

VERSATILE

Interface with USB 2.0 / 3.0, Camera Link, HOTLink, HDMI, DVI, 3G-SDI, GigE Vision, or 10GB Ethernet.

RELIABLE

Perform sustained, reliable, high-speed, recording with zero dropped frames for mission-critical video and complex data, to a high-capacity DVR.

ROBUST

Capture massive video files and critical data faster in RAW or compressed format via the built-in high-bandwidth network interface.

IMMEDIATE

Remove the portable drive with the easy-to-grab handle for debriefing, and observe, review, and enhance video with optional VAADRView software.

APPLICATIONS

- Military or Commercial Airborne Recording
- Ground Vehicle Recording
- Reconnaissance
- UAV
- Mission Training
- Space Launch Imaging



PROVEN

Leverage our 15 years of experience, as well as proven solutions for high-profile defense, military, and aerospace clients.



TRUSTED

Rest easy with a COTS drive, designed, coded, manufactured, and supported in the USA.

OPERATING SPECIFICATIONS

SUSTAINED BANDWIDTH 750 MB/sec

PHYSICAL

DIMENSIONS 6.36" x 6.13" x 1.25" (LWH)

WEIGHT 2.5 lbs (1.1 kg)

VOLUME 48.7 cu in

ENVIRONMENTAL

RUGGEDIZATION STANDARD MIL-STD-810F

OPERATING TEMPERATURE -25°C to +70°C (Self heating at temperature below -25°C)

NON-OPERATING TEMPERATURE -50°C to +85°C

MECHANICAL SHOCK 810F, Method 516.5, Procedure 1

VIBRATION 810F, Method 514.5, Procedure 1

MAX ALTITUDE Op: 50k feet, Non-Op: 70k feet

HUMIDITY 810F, Method 507.4

EMI/EMC MIL-STD-461E, including CE102, RE102, CS101, CS114, CS115, CS116, RS103

ELECTRICAL

POWER 12V power barrel for desktop operation
28V thru rear connector
Battery Backed RTC

MAX POWER CONSUMPTION 40 Watts

INTERFACE OPTIONS

HOTLINK 8 RX Channels
2 TX Channels (Via alternate I/O module)

ANALOG VIDEO 2 Channels In, 1 Channel Out RS170 or NTSC (Standard I/O module)

ETHERNET 2 1Gb RX/TX Channels, 1 10 GB RX/TX (Standard I/O module)

CONTROL 5 RS422 RX Channels, 2 RS422 TX Channels, 1 RS232 Transceiver (Standard I/O module)

16 General Purpose I/O (Via alternate I/O module)

HD-SDI 1 Input 1 Output (Via alternate I/O module)

CAMERA LINK 1 Base Config Input (Via alternate I/O module)

AUDIO 16 bit Line Level Input/Output (Via alternate I/O module)

XAUI 4 Pair RX/TX (Via alternate I/O module)

XFI 1 Pair RX/TX (Via alternate I/O module)

Other Options Available Upon Request

DEBRIEF OPTIONS

USB 1 - USB 2.0/3.0

Other Options Available Upon Request

AVAILABLE RECORDING CAPACITIES 512GB up to 16TB

